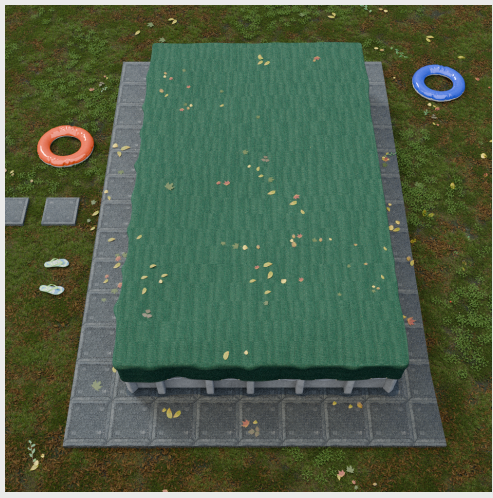


# Installation Guide - Swimming Pool Covers

## Installation Guide: Swimming Pool Covers for Above Ground Pools



- Unfold the cover and position it over the pool.
  - Let it rest atop the water surface.
  - Adjust the cover so it is centered and evenly distributed for uniform coverage.
  - Starting at one end of the pool, weave the cable or rope through the grommets along the edge of the cover.
  - Thread the cable or rope through the grommets on the opposite side of the pool.
- Ensure the cable or rope is taut and evenly distributed.
  - Insert both ends of the cable through the tensioner winch. Turn the handle to tighten the cable, pulling the cover snugly over the pool.
  - Turn the handle or operate the motor to tighten the cable, pulling the cover snugly over the pool.
  - Once the cover is securely in place, inspect it to ensure there are no gaps or are where debris could enter the pool.

## Swimming Pool Safety Precautions to Prevent Injury or Drowning

- Be aware that this cover is not a safety cover.
- Ensure the children are kept away from the pool cover.
- The pool cover is not designed to bear the weight.
- Secure the pool cover properly to avoid potential hazards.
- Do not walk on the pool cover or use it for support.